



# RADIO TEST REPORT

for

## Locator

**MODEL:** S10, Wireless tag, S1, S2, S3, S4, S5, S6, S7, S8, S9, S11, S12, S13, S14, S15, S16, S17, S18, S19, S20, S21, S22, S23, S24, S25, S26, S27, S28, S29, S30, HB02, HB09, HB10, HB11, HB12, HB13, HB14, HB15, HB16, Smart Locator, Sualiotag, Sualio, EITag, TIKOTAG, TIKOTAG Pro, Locator, Wireless card, itemN locator, itemX locator, Wireless locator, Smart tag, mini card, mini card locator, wireless card locator

**Trade Mark: N/A**

**Test Report Number: SIT240506160201ER-2**

**Issued Date: May 11, 2024**

Issued for

**Shenzhen Vision Future Technology Co., Ltd.**

**No. 3F, Building D, Jinchi Technology Park, No. 3 Jiuwei 1st Road,  
Hangcheng St., Baoan Dist., Shenzhen**

Issued By:

**SHENZHEN SIT TESTING TECHNOLOGY CO.,LTD  
Room 401, Building A2, The 2nd Industrial Zone  
of Zhu'ao, Gushu, Xixiang, Bao'an District,  
Shenzhen, Guangdong, China**

**TEL: +86-755-29173399**

**FAX: +86-755-29179933**

**Note:** *This report shall not be reproduced except in full, without the written approval of Shenzhen SIT Testing Technology Co.,Ltd This document may be altered or revised by Shenzhen SIT Testing Technology Co.,Ltd personnel only, and shall be noted in the revision section of the document. The test results in the report only apply to the tested sample.*

**Revision History Of Report**

Rev.	Issue No.	Revisions	Effect Page	Revised By
00	SIT240506160201ER-2	Initial Issue	ALL	Kevin Sun

## TABLE OF CONTENTS

<b>1</b>	<b>TEST CERTIFICATION</b> .....	<b>4</b>
<b>2</b>	<b>TEST RESULT SUMMARY</b> .....	<b>5</b>
<b>3</b>	<b>EUT DESCRIPTION</b> .....	<b>6</b>
<b>4</b>	<b>TEST METHODOLOGY</b> .....	<b>7</b>
	4.1. DECISION OF FINAL TEST MODE .....	7
	4.2. EUT SYSTEM OPERATION .....	7
<b>5</b>	<b>SETUP OF EQUIPMENT UNDER TEST</b> .....	<b>8</b>
	5.1. DESCRIPTION OF SUPPORT UNITS .....	8
	5.2. CONFIGURATION OF SYSTEM UNDER TEST .....	8
<b>6</b>	<b>ACCREDITATIONS</b> .....	<b>9</b>
	6.1. ACCREDITATIONS .....	9
<b>7</b>	<b>ETSI EN 300 328 REQUIREMENTS</b> .....	<b>10</b>
	7.1 TRANSMITTER REQUIREMENTS .....	10
	7.1.1 MAXIMUM TRANSMIT POWER .....	10
	7.1.2 FREQUENCY RANGE .....	13
	7.1.3 FREQUENCY HOPPING REQUIREMENT .....	15
	7.1.4 TRANSMITTER SPURIOUS EMISSION .....	27
	7.1.5 RECEIVER SPURIOUS EMISSIONS .....	30
<b>8</b>	<b>PHOTOGRAPHS OF THE TEST CONFIGURATION</b> .....	<b>33</b>
<b>9</b>	<b>PHOTOGRAPHS OF EUT</b> .....	<b>34</b>

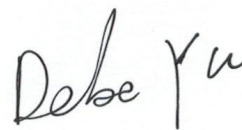
# 1 TEST CERTIFICATION

<b>Product:</b>	Locator
<b>Model:</b>	The same as page 1
<b>Trade Mark:</b>	N/A
<b>Applicant:</b>	<b>Shenzhen Vision Future Technology Co., Ltd.</b> No. 3F, Building D, Jinch Technology Park, No. 3 Jiuwei 1st Road, Hangcheng St., Baoan Dist., Shenzhen
<b>Factory:</b>	<b>Shenzhen Vision Future Technology Co., Ltd.</b> No. 3F, Building D, Jinch Technology Park, No. 3 Jiuwei 1st Road, Hangcheng St., Baoan Dist., Shenzhen
<b>Tested:</b>	May 05, 2024~May 11, 2024
<b>Test Voltage:</b>	Power supplied by 3V button battery

APPLICABLE STANDARDS	
STANDARD	TEST RESULT
ETSI EN 300 328 V2.2.2 (2019-07)	No non-compliance noted

The above equipment has been tested by Shenzhen SIT Testing Technology Co.,Ltd, and found compliance with the requirements set forth in the technical standards mentioned above. The results of testing in this report apply only to the product/system, which was tested. Other similar equipment will not necessarily produce the same results due to production tolerance and measurement uncertainties.

Prepared by :



Assistant

Reviewer :



Supervisor

Approved & Authorized Signer :



## 2 TEST RESULT SUMMARY

Test Items	Test Results
Equivalent Isotropic Radiated Power	Pass
Maximum spectral power density	N.A*
Frequency Range	Pass
Frequency hopping requirements	Pass
Medium access protocol	Pass *
Transmitter Spurious Emissions	Pass
Receiver spurious emissions	Pass

Note:

N.A\*- This item has no requirement for FHSS equipment.

Pass \*- The manufacturer has verified that medium access protocol has been implemented by the EUT.

### 3 EUT DESCRIPTION

<b>Product</b>	Locator
<b>Model</b>	S10
<b>Trade Mark</b>	N/A
<b>Applicant</b>	Shenzhen Vision Future Technology Co., Ltd.
<b>Antenna Type</b>	PCB Antenna
<b>EUT Power Rating</b>	Power supplied by 3V button battery
<b>Temperature Range(Operating)</b>	-10~40°C
<b>Operating Frequency</b>	2402-2480MHz (79 Channels)
<b>Modulation type</b>	GFSK

*Note: N/A. stand for no applicable.*

## 4 TEST METHODOLOGY

### 4.1. DECISION OF FINAL TEST MODE

The EUT was tested together with the below additional components, and configuration, which produced the worst emission levels, was selected and recorded in this report.

The measurement was performed at 3 axis for lie orientation, side orientation and stand orientation. The lie orientation is the worst mode, so only the worst mode test data was reported.

The following test mode was recorder in this report.

Items	Test Content	Test mode
1	Maximum transmit power	Operating
2	Frequency range	Operating
3	Dwell time	Operating
4	Channel separation	Operating
5	Channel number	Operating
6	Transmitter spurious emission	Operating & Standby
7	Receiver spurious emissions	Operating

### 4.2. EUT SYSTEM OPERATION

1. Set up EUT with the support equipments.
2. Make sure the EUT work normally during the test.

## 5 SETUP OF EQUIPMENT UNDER TEST

### 5.1. DESCRIPTION OF SUPPORT UNITS

The EUT has been tested as an independent unit together with other necessary accessories or support units. The following support units or accessories were used to form a representative test configuration during the tests.

No.	Equipment	Model No.	Serial No.	FCC ID	Trade Name	Data Cable	Power Cord
1.	PC	Dx2700	CNG7140T7P	N/A	HP	Unshielded 1.4m	Unshielded 1.6m
2.	Monitor	HPL1706V	CND74535YZ	N/A	HP	Unshielded 1.2m	Unshielded 1.6m
3.	Keyboard	SK-2880	435302-AA1	N/A	HP	Unshielded 1.2m	N/A

**Note:**

- 1) All the equipment/cables were placed in the worst-case configuration to maximize the emission during the test.
- 2) Grounding was established in accordance with the manufacturer's requirements and conditions for the intended use.

### 5.2. CONFIGURATION OF SYSTEM UNDER TEST

EUT

(EUT: Locator)

## 6 ACCREDITATIONS

### 6.1. ACCREDITATIONS

Our laboratories are accredited and approved by the following approval agencies according to ISO/IEC 17025.

<b>USA</b>	<b>FCC</b>
	<b>TIMCO</b>
<b>Japan</b>	<b>VCCI</b>
<b>Canada</b>	<b>INDUSTRY CANADA</b>
<b>Germany</b>	<b>TUV</b>
	<b>EMC</b>
	<b>PHOENIX</b>
	<b>Eurofins</b>

Copies of granted accreditation certificates are available for downloading from our web site, <http://www.sit-cert.com>

## 7 ETSI EN 300 328 REQUIREMENTS

### 7.1 TRANSMITTER REQUIREMENTS

#### 7.1.1 Maximum transmit Power

#### LIMIT

##### ETSI EN 300 328 V2.2.2 clause 4.3.1.2

The maximum transmit power is defined as the maximum isotropic radiated power of the equipment. The equivalent isotropic radiated power (e.i.r.p) shall be equal to or less than -10dBW(100mW).

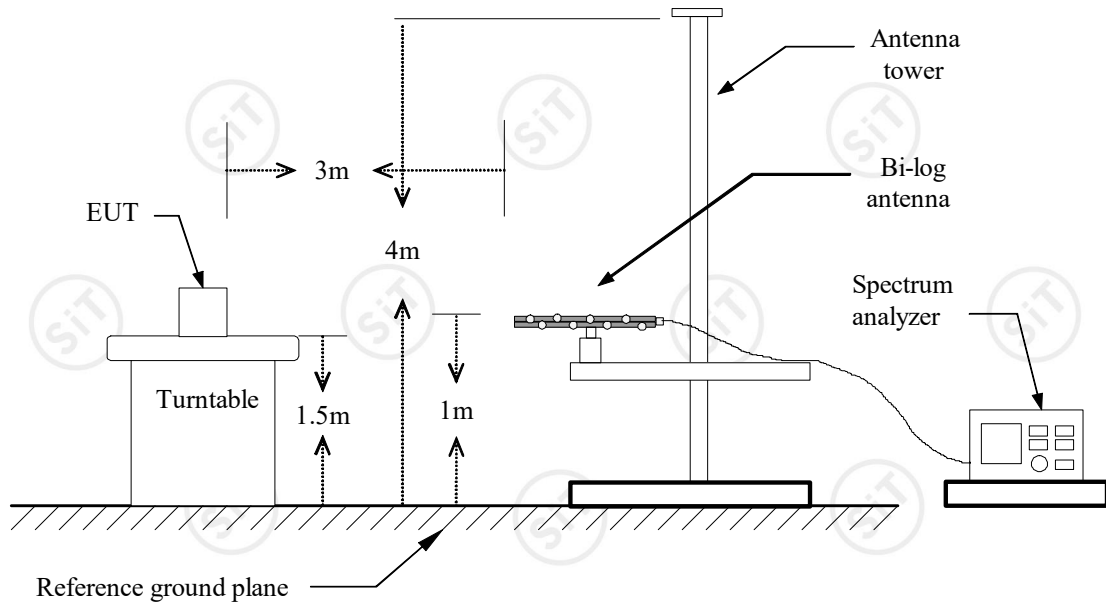
#### MEASUREMENT EQUIPMENT USED

Name of Equipment	Manufacturer	Model	Serial Number	Calibration Due
Spectrum Analyzer	R&S	FSU	100114	09/24/2024
EMI Test Receiver	R&S	ESCI	100005	09/26/2024
Pre Amplifier	H.P.	HP8447E	2945A02715	09/26/2024
Pre-Amplifier	Compliance	PAM0118	1360976	09/20/2024
Bilog Antenna	SUNOL Sciences	JB5	A021907	09/16/2024
Turn Table	EMCO	2081-1.21	N/A	N.C.R
Antenna Tower	CT	N/A	N/A	N.C.R
Controller	CT	N/A	N/A	N.C.R
RF Comm. Test set	HP	8920B	US36142090	N.C.R
Site NSA	C&C	N/A	N/A	09/20/2024
Horn Antenna	Compliance	CE18000	001	09/20/2024

**Remark:** Each piece of equipment is scheduled for calibration once a year.

## Test Configuration

### **Below 1GHz**



## TEST PROCEDURE

1. Please refer to ETSI EN 300 328 V2.2.2 Sub-clause 5.3 for the test conditions.
2. Please refer to ETSI EN 300 328 V2.2.2 Sub-clause 5.7.2 for the measurement method.

**TEST RESULTS***No non-compliance noted*

EUT	: Locator	Temperature	: 25°C
Model No.	: S10	Humidity	: 55%
Test Mode	: Operating	Test Engineer	: Debe Yu

Test condition	CH	EIRP (dBm)	Limit (dBm)	Margin (dB)	Conclusion
DC 3.7V 25°C	2402MHz	0.35	20	-19.65	PASS
	2441MHz	0.42	20	-19.58	PASS
	2480MHz	0.26	20	-19.74	PASS
DC 3V -20°C	2402MHz	0.36	20	-19.64	PASS
	2441MHz	0.31	20	-19.69	PASS
	2480MHz	0.33	20	-19.67	PASS
DC 3.7V -20°C	2402MHz	0.47	20	-19.53	PASS
	2441MHz	0.39	20	-19.61	PASS
	2480MHz	0.35	20	-19.65	PASS
DC 3V 55°C	2402MHz	0.29	20	-19.71	PASS
	2441MHz	0.48	20	-19.52	PASS
	2480MHz	0.42	20	-19.58	PASS
DC 3.7V 55°C	2402MHz	0.43	20	-19.57	PASS
	2441MHz	0.39	20	-19.61	PASS
	2480MHz	0.37	20	-19.63	PASS
Measurement uncertainty		±6dB			

Note: 1. EIRP = Reading -cable loss + antenna gain

2. Cable Loss: 2 dB, Antenna Gain: 1 dBi

## 7.1.2 Frequency range

### LIMIT

#### **ETSI EN 300 328 V2.2.2 clause 4.3.1.2**

The frequency range shall lie with the band 2.4GHz to 2.47835GHz( $f_L > 2.4\text{GHz}$  and  $f_H < 2.4835\text{GHz}$ )

### MEASUREMENT EQUIPMENT USED

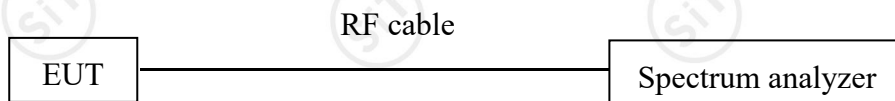
Name of Equipment	Manufacturer	Model	Serial Number	Calibration Due
Spectrum Analyzer	R&S	FSU	100114	09/24/2024
EMI Test Receiver	R&S	ESCI	100005	09/26/2024

**Remark:** Each piece of equipment is scheduled for calibration once a year.

### TEST PROCEDURE

1. Please refer to ETSI EN 300 328 V2.2.2 Sub-clause 5.3 for the test conditions.
2. Please refer to ETSI EN 300 328 V2.2.2 Sub-clause 5.7.4 for the measurement method.

### Test Configuration



**TEST RESULTS**

EUT : Locator \_\_\_\_\_ Temperature : 25°C  
 Model No. : S10 \_\_\_\_\_ Humidity : 55%  
 Test Mode : Operating \_\_\_\_\_ Test Engineer : Debe Yu \_\_\_\_\_

Test Conditions		CH	Result(GHz)	Limit(GHz)	Conclusion
Volt	Temp				
DC 3.7V	25°C	2402MHz	2.40215	>2.4000	PASS
		2480MHz	2.48238	<2.4835	PASS
DC 3V	-20°C	2402MHz	2.40228	>2.4000	PASS
		2480MHz	2.48267	<2.4835	PASS
DC 3.7V	-20°C	2402MHz	2.40196	>2.4000	PASS
		2480MHz	2.48203	<2.4835	PASS
DC 3V	55°C	2402MHz	2.40187	>2.4000	PASS
		2480MHz	2.48256	<2.4835	PASS
DC 3.7V	55°C	2402MHz	2.40116	>2.4000	PASS
		2480MHz	2.48237	<2.4835	PASS

**Note1: Volt=Voltage Temp=Temperature**

### 7.1.3 Frequency hopping requirement

#### 7.1.3.1 Dwell time

#### LIMIT

##### ETSI EN 300 328 V2.2.2 Sub-clause 4.3.4.1.2

The maximum dwell time shall be 0.4s

#### MEASUREMENT EQUIPMENT USED

Name of Equipment	Manufacturer	Model	Serial Number	Calibration Due
Spectrum Analyzer	R&S	FSU	100114	09/24/2024
EMI Test Receiver	R&S	ESCI	100005	09/26/2024

*Remark: Each piece of equipment is scheduled for calibration once a year.*

#### Test Configuration

Same as frequency range.

#### TEST PROCEDURE

1. The EUT was placed on a turntable which is 0.8m above ground plane.
2. Connect EUT RF output port to the Spectrum Analyzer through an RF attenuator
3. Set the EUT work on the CH1
4. Set SPA Center Frequency = Operation frequency, RBW=1MHz, VBW=3MHz, Span:0Hz.
5. Set SPA trace max hold, then view.

#### TEST RESULTS

EUT	: Locator	Temperature	: 25°C
Model No.	: S10	Humidity	: 55%
Test Mode	: Operating	Test Engineer	: Debe Yu

**DH1 mode**

Channel	Pulse width (ms)	Dwell time (s)	Limit (s)	Result
Low	0.485	0.1552	0.4	Pass
Mid	0.490	0.1568	0.4	Pass
High	0.490	0.1568	0.4	Pass

NOTE: Dwell time = Pulse time\*(1600/2/79)\*31.6S

**DH3 mode**

Channel	Pulse width (ms)	Dwell time (s)	Limit (s)	Result
Low	1.760	0.2816	0.4	Pass
Mid	1.760	0.2816	0.4	Pass
High	1.770	0.2832	0.4	Pass

NOTE: Dwell time = Pulse time\*(1600/4/79)\*31.6S

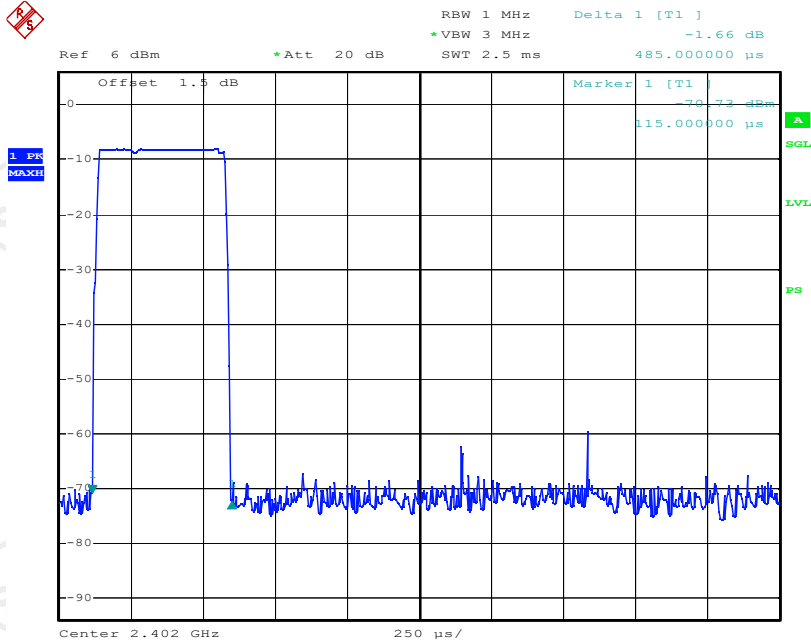
**DH5 mode**

Channel	Pulse width (ms)	Dwell time (s)	Limit (s)	Result
Low	3.040	0.3243	0.4	Pass
Mid	3.060	0.3264	0.4	Pass
High	3.060	0.3264	0.4	Pass

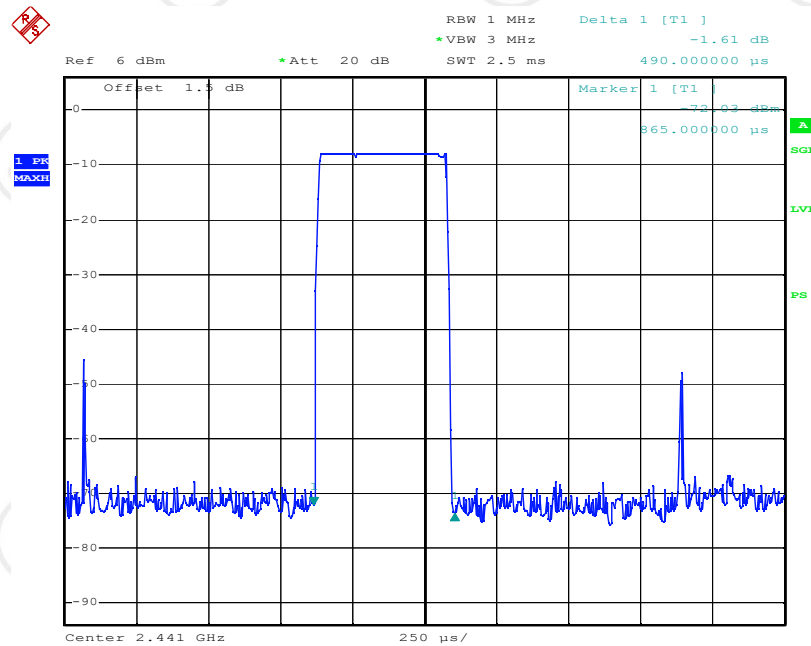
NOTE: Dwell time = Pulse time\*(1600/6/79)\*31.6S

Please refer to the following plots.

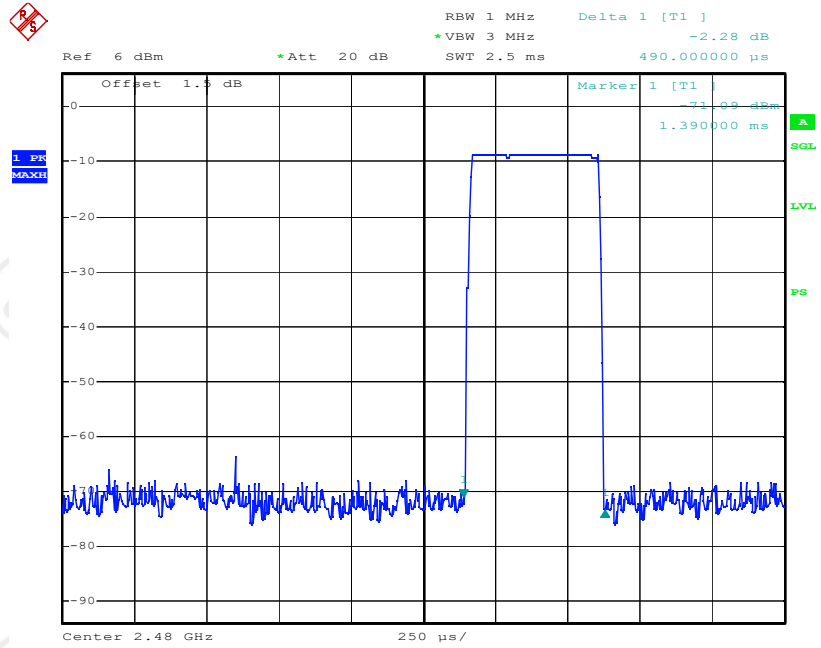
### Low Channel for DH 1



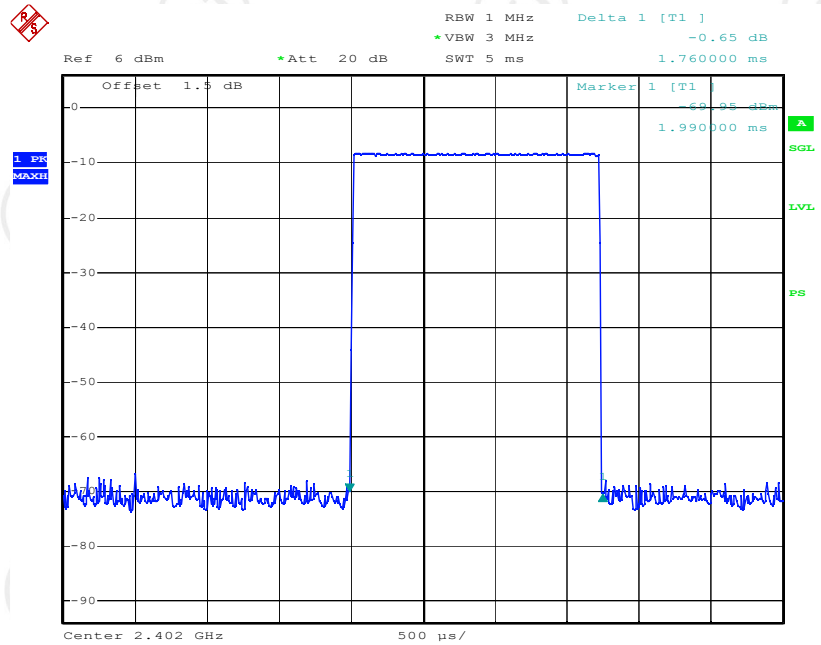
### Middle Channel for DH 1



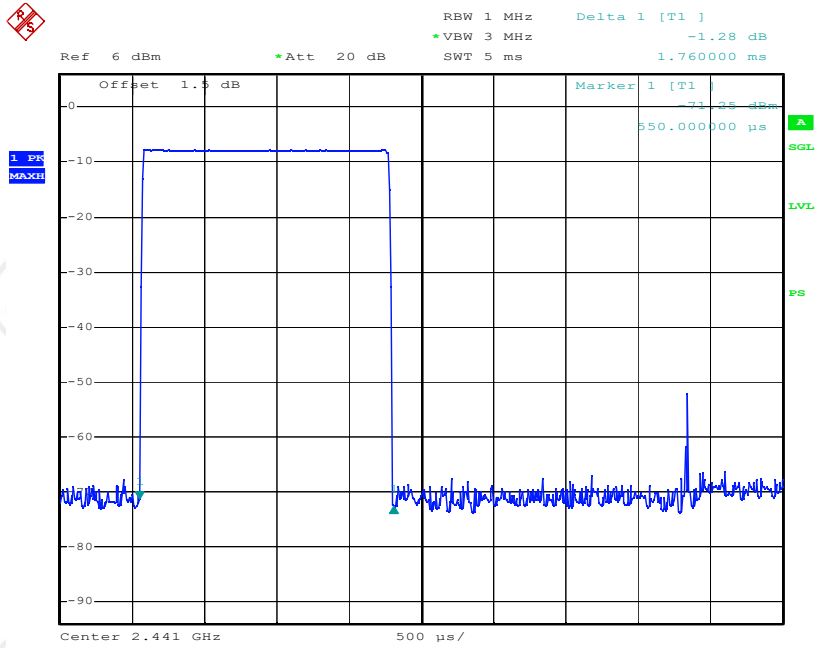
### High Channel for DH 1



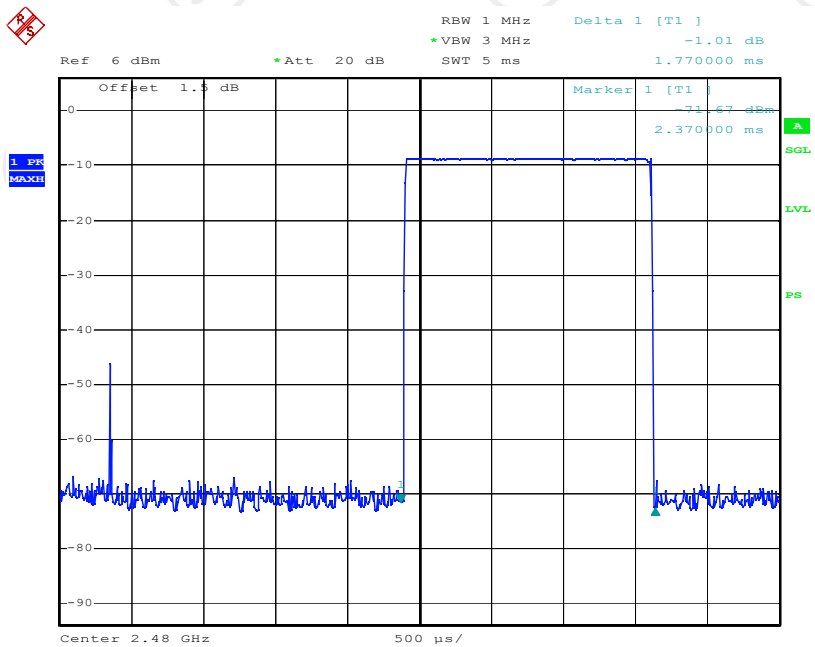
### Low Channel for DH 3



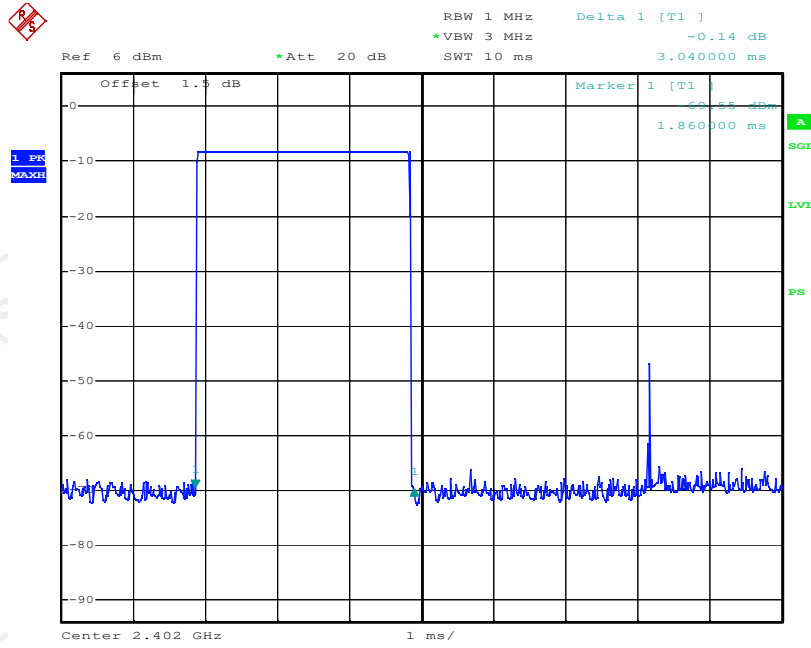
### Middle Channel for DH 3



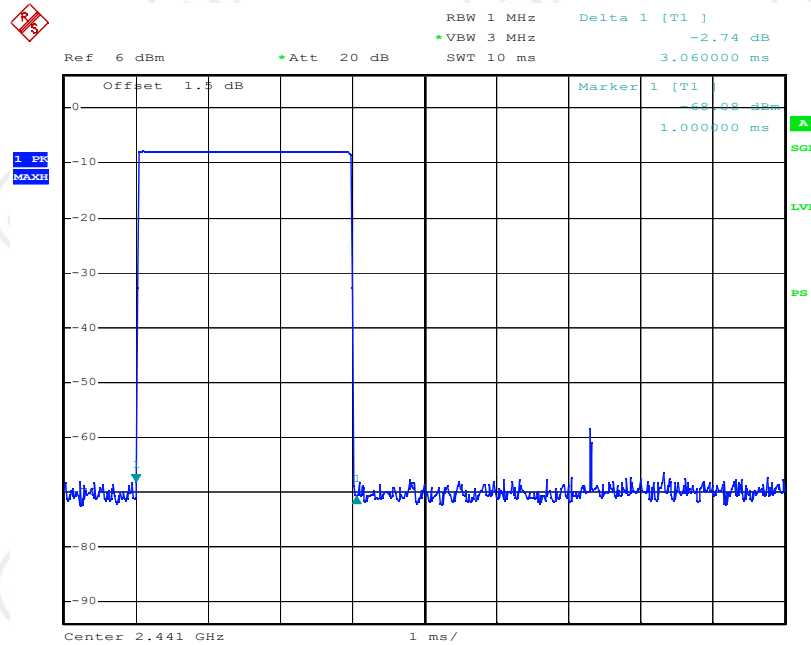
### High Channel for DH 3



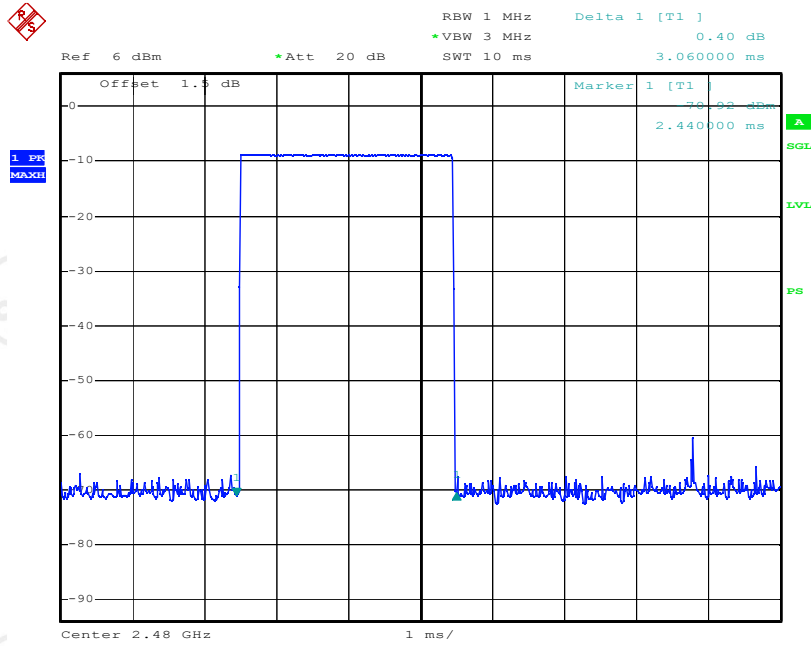
### Low Channel for DH 5



### Middle Channel for DH 5



### High Channel for DH 5



### 7.1.3.2 Channel Separation

#### LIMIT

##### ETSI EN 300 328 V2.2.2 Sub-clause 4.3.4.2.2

Non-adaptive Frequency Hopping systems shall make use of non-overlapping hopping channels separated by the channel bandwidth as measured at 20dB below peak power

#### MEASUREMENT EQUIPMENT USED

Name of Equipment	Manufacturer	Model	Serial Number	Calibration Due
Spectrum Analyzer	R&S	FSU	100114	09/24/2024
EMI Test Receiver	R&S	ESCI	100005	09/26/2024

**Remark:** Each piece of equipment is scheduled for calibration once a year.

#### Test Configuration

Same as frequency range.

#### TEST PROCEDURE

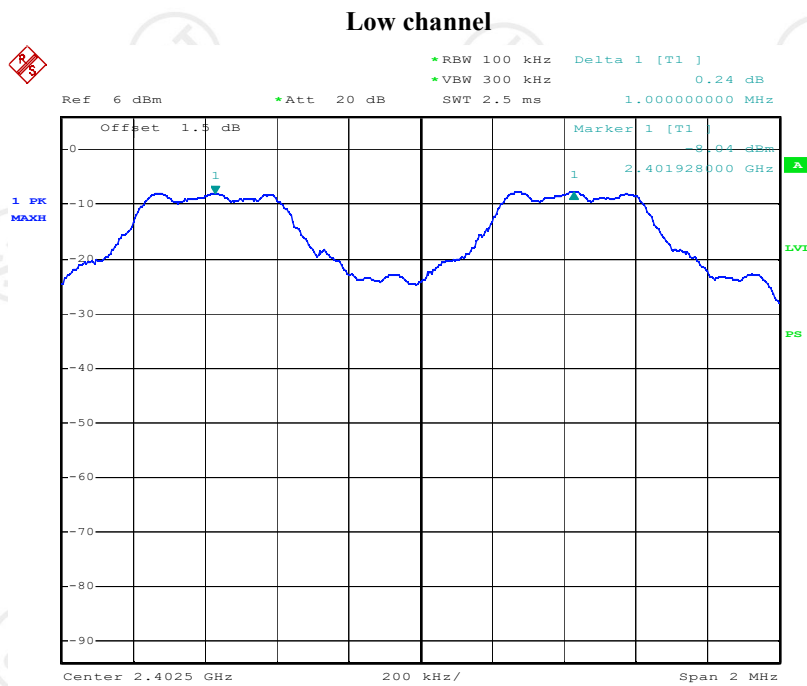
1. The EUT was placed on a turntable which is 0.8m above ground plane.
2. Connect EUT RF output port to the Spectrum Analyzer through an RF attenuator
3. Set the EUT work on the hopping mode.
4. Set SPA Center Frequency = Operation frequency, RBW=30kHz, VBW=100kHz,
5. Set SPA trace max hold, then view.

#### TEST RESULTS

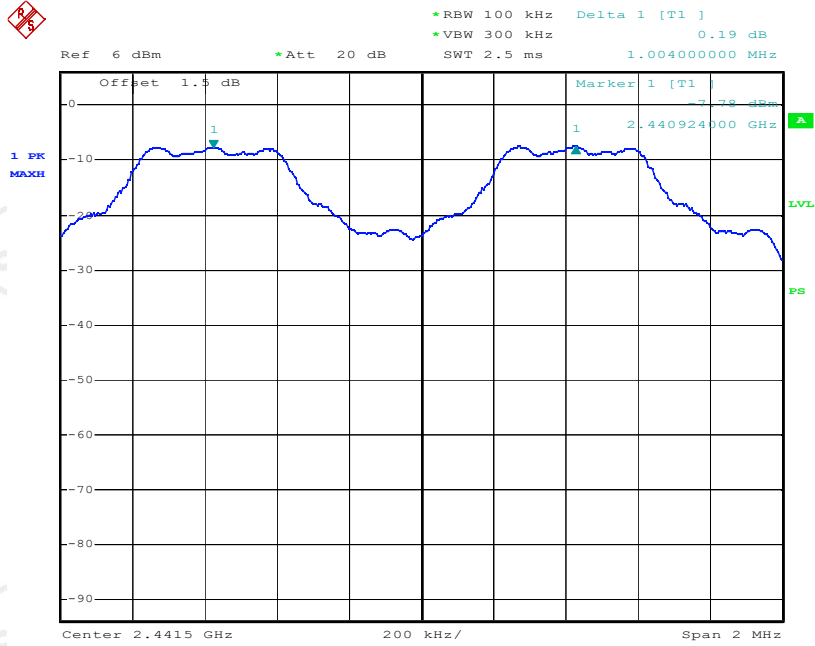
EUT	: Locator	Temperature	: 25°C
Model No.	: S10	Humidity	: 55%
Test Mode	: Operating	Test Engineer	: Debe Yu

Channel	Channel Frequency (MHz)	Channel Separation (MHz)	Limit (MHz)	Result
Low Channel	2402	1.000	1	Pass
Adjacent Channel	2403			
Middle Channel	2441	1.004	1	Pass
Adjacent Channel	2442			
High Channel	2480	1.000	1	Pass
Adjacent Channel	2479			

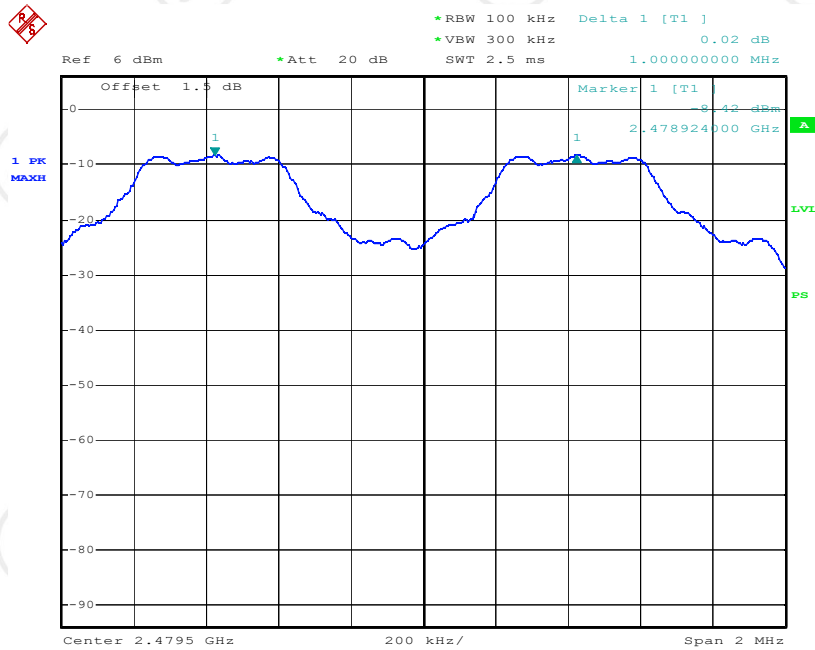
Please refer to following plots:



### Middle channel



### High channel



**7.1.3.3 Channel number**

**LIMIT**

**ETSI EN 300 328 V2.2.2 Sub-clause 4.3.4.2.2**

Non-adaptive Frequency Hopping systems shall make use of a hopping sequence(s) that contains at least 15 hopping channels

**MEASUREMENT EQUIPMENT USED**

Name of Equipment	Manufacturer	Model	Serial Number	Calibration Due
Spectrum Analyzer	R&S	FSU	100114	09/24/2024
EMI Test Receiver	R&S	ESCI	100005	09/26/2024

*Remark: Each piece of equipment is scheduled for calibration once a year.*

**Test Configuration**

Same as frequency range.

**TEST PROCEDURE**

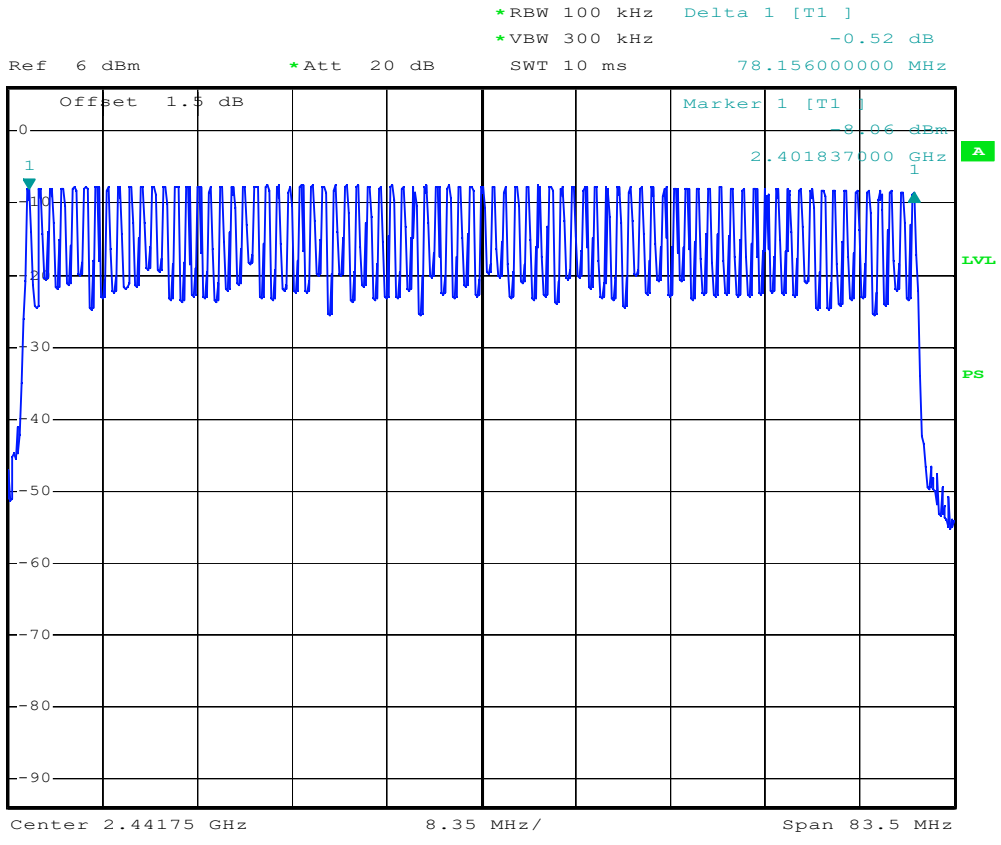
- 1.The EUT was placed on a turntable which is 0.8m above ground plane.
- 2.Connect EUT RF output port to the Spectrum Analyzer through an RF attenuator
3. Set the EUT work on the hopping mode.
4. Set SPA Center Frequency = Operation frequency, RBW=300kHz,VBW=1MHz,.
5. Set SPA trace max hold, then view.

**TEST RESULTS**

Compliance standard requirement.

Details see following test plots.

EUT	:	<u>Locator</u>	Temperature	:	<u>25°C</u>
Model No.	:	<u>S10</u>	Humidity	:	<u>55%</u>
Test Mode	:	<u>Operating</u>	Test Engineer	:	<u>Debe Yu</u>



## 7.1.4 Transmitter spurious emission

### LIMIT

#### ETSI EN 300 328 V2.2.2 clause 4.3.6.2

The spurious emissions of the transmitter shall not exceed the values of following table in the indicated bands.

Frequency range	Limit when operating	Limit when in standby
30 MHz to 1 GHz	-36 dBm	-57 dBm
above 1 GHz to 12,75 GHz	-30 dBm	-47 dBm
1,8 GHz to 1,9 GHz 5,15 GHz to 5,3 GHz	-47 dBm	-47 dBm

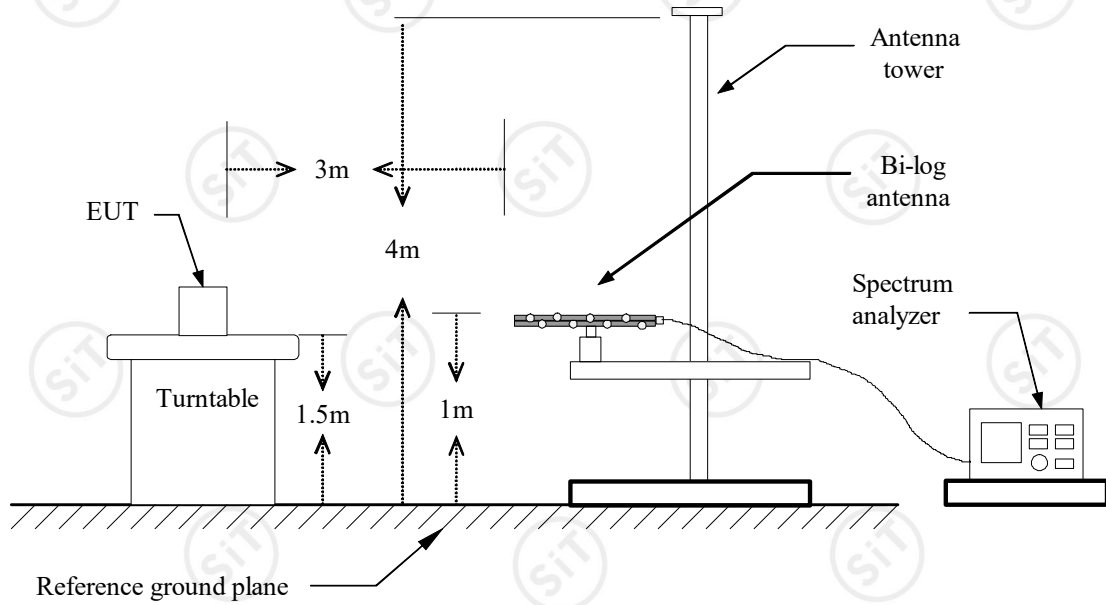
### MEASUREMENT EQUIPMENT USED

Name of Equipment	Manufacturer	Model	Serial Number	Calibration Due
Spectrum Analyzer	R&S	FSU	100114	09/24/2024
EMI Test Receiver	R&S	ESCI	100005	09/26/2024
Pre Amplifier	H.P.	HP8447E	2945A02715	09/26/2024
Pre-Amplifier	Compliance	PAM0118	1360976	09/20/2024
Bilog Antenna	SUNOL Sciences	JB5	A021907	09/16/2024
Turn Table	EMCO	2081-1.21	N/A	N.C.R
Antenna Tower	CT	N/A	N/A	N.C.R
Controller	CT	N/A	N/A	N.C.R
RF Comm. Test set	HP	8920B	US36142090	N.C.R
Site NSA	C&C	N/A	N/A	09/20/2024
Horn Antenna	Compliance	CE18000	001	09/20/2024

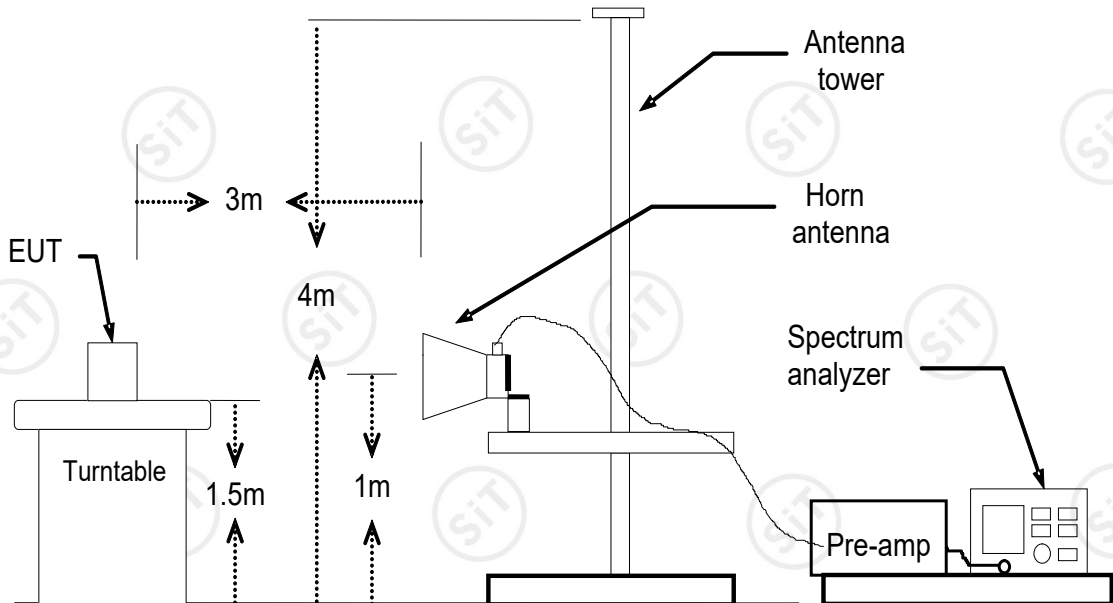
**Remark:** Each piece of equipment is scheduled for calibration once a year.

### Test Configuration

#### Below 1GHz



#### Above 1GHz



**TEST RESULTS**

EUT	: Locator	Temperature	: 25°C
Model No.	: S10	Humidity	: 55%
Test Mode	: Operating & Standby	Test Engineer	: Debe Yu

Fre. (MHz)	ANT. Pol.	Result (dBm)	Limit	Margin	Conclusion
Test Mode: Lowest frequency					
434.0	H	-64.35	-36	-28.35	<b>PASS</b>
434.0	V	-73.15	-36	-37.15	<b>PASS</b>
2412.0	H	-67.24	-30	-37.24	<b>PASS</b>
2412.0	V	-65.28	-30	-35.28	<b>PASS</b>
2968.0	H	-65.29	-30	-35.29	<b>PASS</b>
2968.0	V	-63.37	-30	-33.37	<b>PASS</b>
4824.0	H	-59.68	-30	-29.68	<b>PASS</b>
4824.0	V	-56.42	-30	-26.42	<b>PASS</b>
Test Mode: Highest frequency					
434.0	H	-62.03	-36	-26.03	<b>PASS</b>
434.0	V	-75.14	-36	-39.14	<b>PASS</b>
2412.0	H	-65.28	-30	-35.28	<b>PASS</b>
2412.0	V	-68.49	-30	-38.49	<b>PASS</b>
4960.0	H	-65.28	-30	-35.28	<b>PASS</b>
4960.0	V	-63.37	-30	-33.37	<b>PASS</b>
8433.0	H	-67.15	-30	-37.15	<b>PASS</b>
8433.0	V	-65.24	-30	-35.24	<b>PASS</b>
Test Mode: Standby					
434.0	H	-72.58	-57	-15.58	<b>PASS</b>
434.0	V	-74.29	-57	-17.29	<b>PASS</b>
2412.0	H	-65.24	-47	-18.24	<b>PASS</b>
2412.0	V	-65.32	-47	-18.32	<b>PASS</b>
2968.0	H	-69.44	-47	-22.44	<b>PASS</b>
2968.0	V	-73.57	-47	-26.57	<b>PASS</b>
8433.0	H	-68.45	-47	-21.45	<b>PASS</b>
8433.0	V	-67.23	-47	-20.23	<b>PASS</b>

Note: 1. ERP = Reading -cable loss + antenna gain

## 7.1.5 Receiver Spurious Emissions

### LIMIT

#### ETSI EN 300 328 V2.2.2

The spurious emissions of the transmitter shall not exceed the values of following table in the indicated bands.

Frequency Range	Limit when in standby
30MHz to 1GHz	-57dBm
Above 1GHz to 12.75GHz	-47dBm

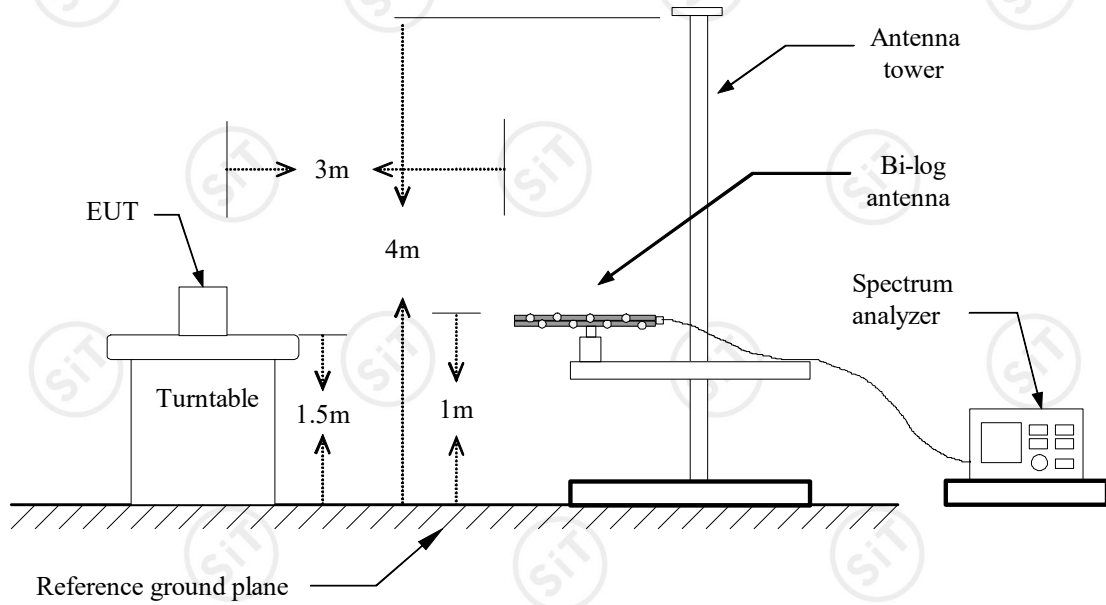
### MEASUREMENT EQUIPMENT USED

Name of Equipment	Manufacturer	Model	Serial Number	Calibration Due
Spectrum Analyzer	R&S	FSU	100114	09/24/2024
EMI Test Receiver	R&S	ESCI	100005	09/26/2024
Pre Amplifier	H.P.	HP8447E	2945A02715	09/26/2024
Pre-Amplifier	Compliance	PAM0118	1360976	09/20/2024
Bilog Antenna	SUNOL Sciences	JB5	A021907	09/16/2024
Turn Table	EMCO	2081-1.21	N/A	N.C.R
Antenna Tower	CT	N/A	N/A	N.C.R
Controller	CT	N/A	N/A	N.C.R
RF Comm. Test set	HP	8920B	US36142090	N.C.R
Site NSA	C&C	N/A	N/A	09/20/2024
Horn Antenna	Compliance	CE18000	001	09/20/2024

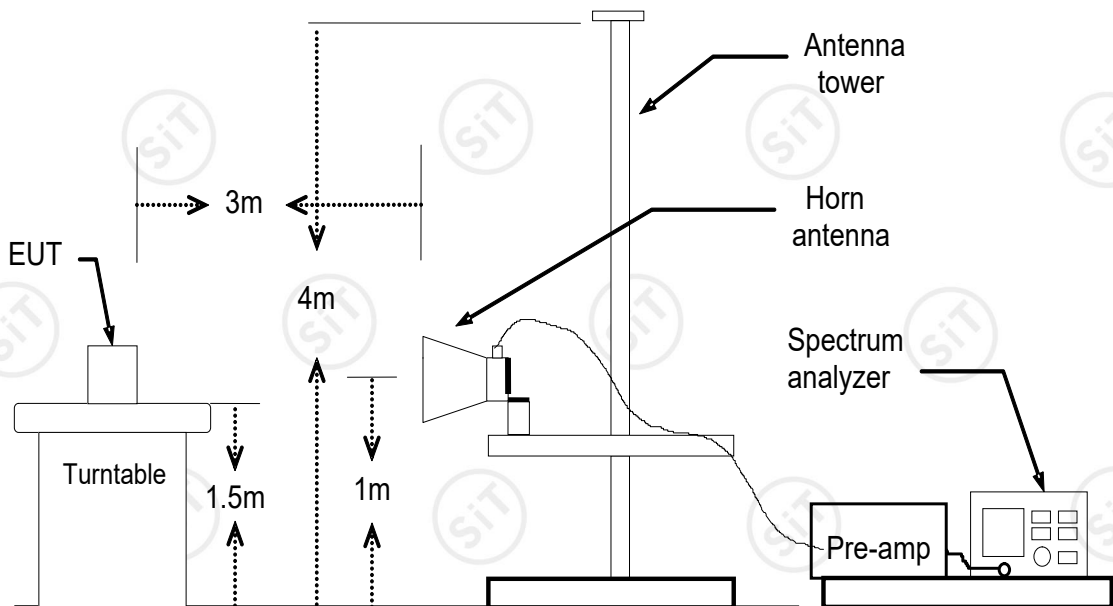
**Remark:** Each piece of equipment is scheduled for calibration once a year.

### Test Configuration

#### Below 1GHz



#### Above 1GHz



**TEST PROCEDURE**

3. Please refer to ETSI EN 300 328 V2.2.2 Sub-clause 5.3 for the test conditions.
4. Please refer to ETSI EN 300 328 V2.2.2 Sub-clause 5.7.5 for the measurement method.

**TEST RESULTS**

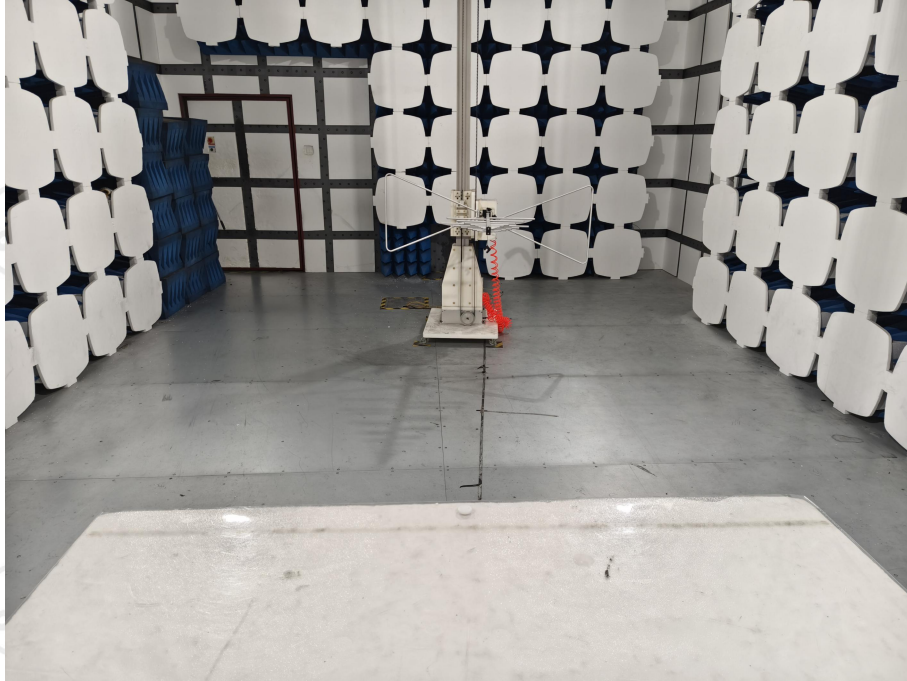
EUT	: Locator	Temperature	: 25°C
Model No.	: S10	Humidity	: 55%
Test Mode	: Operating	Test Engineer	: Debe Yu

Fre. (MHz)	ANT. Pol.	ERP (dBm)	Limit	Margin	Conclusion
Test Mode: Lowest frequency					
434.0	H	-72.01	-57	-15.01	<b>PASS</b>
434.0	V	-75.14	-57	-18.14	<b>PASS</b>
2412.0	H	-64.28	-47	-17.28	<b>PASS</b>
2412.0	V	-58.59	-47	-11.59	<b>PASS</b>
2968.0	H	-63.37	-47	-16.37	<b>PASS</b>
2968.0	V	-64.14	-47	-17.14	<b>PASS</b>
4824.0	H	-58.67	-47	-11.67	<b>PASS</b>
4824.0	V	-64.21	-47	-17.21	<b>PASS</b>
Test Mode: Highest frequency					
434.0	H	-66.39	-57	-9.39	<b>PASS</b>
434.0	V	-65.78	-57	-8.78	<b>PASS</b>
2412.0	H	-62.24	-47	-15.24	<b>PASS</b>
2412.0	V	-60.37	-47	-13.37	<b>PASS</b>
2968.0	H	-64.28	-47	-17.28	<b>PASS</b>
2968.0	V	-67.48	-47	-20.48	<b>PASS</b>
4824.0	H	-60.24	-47	-13.24	<b>PASS</b>
4824.0	V	-58.59	-47	-11.59	<b>PASS</b>

Note: 1. ERP = Reading -cable loss + antenna gain

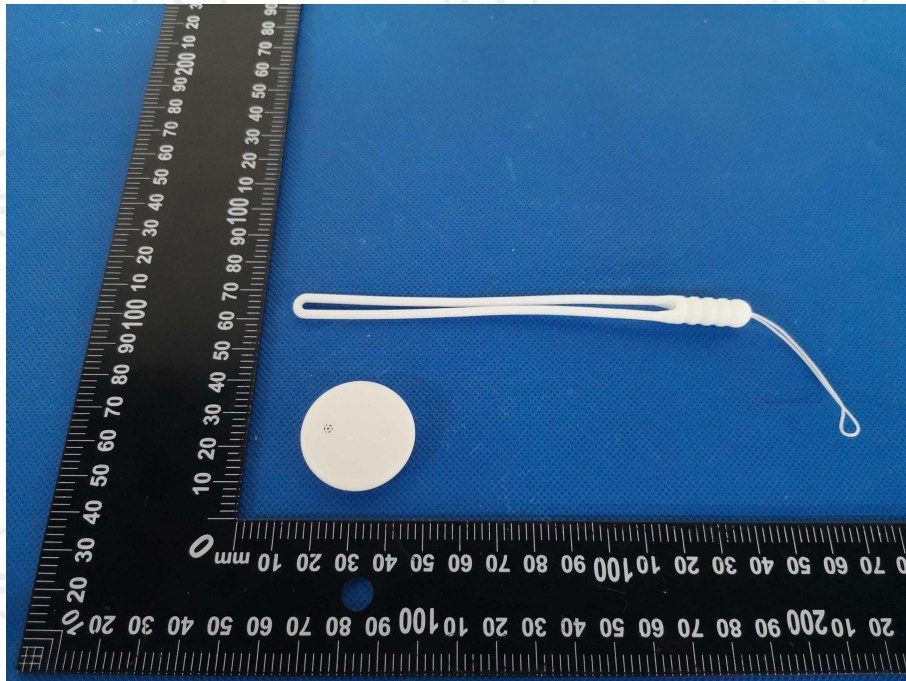
## 8 PHOTOGRAPHS OF THE TEST CONFIGURATION

### Radiated Measurement Photos

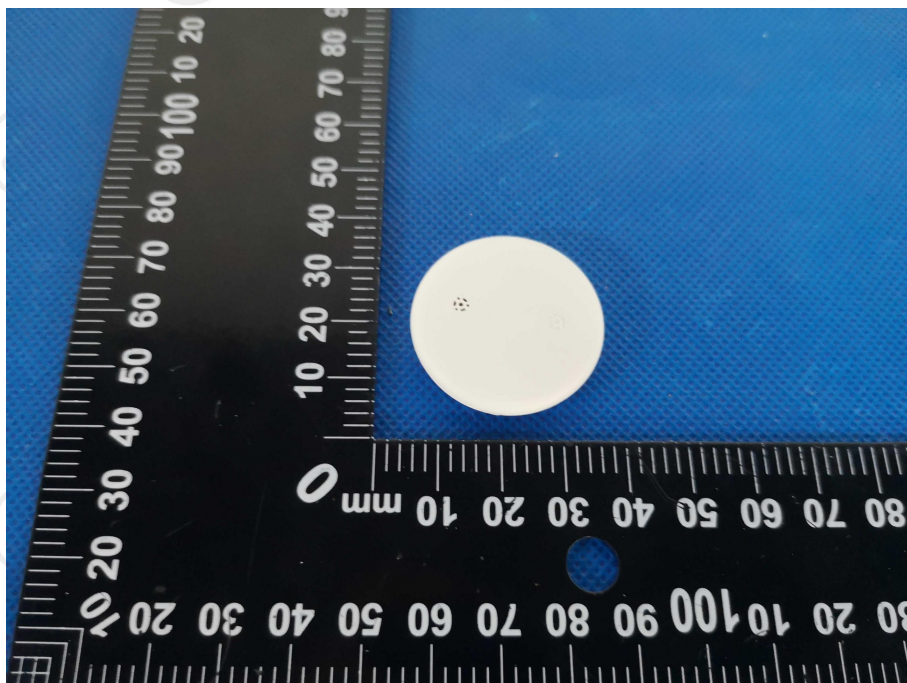


## 9 PHOTOGRAPHS OF EUT

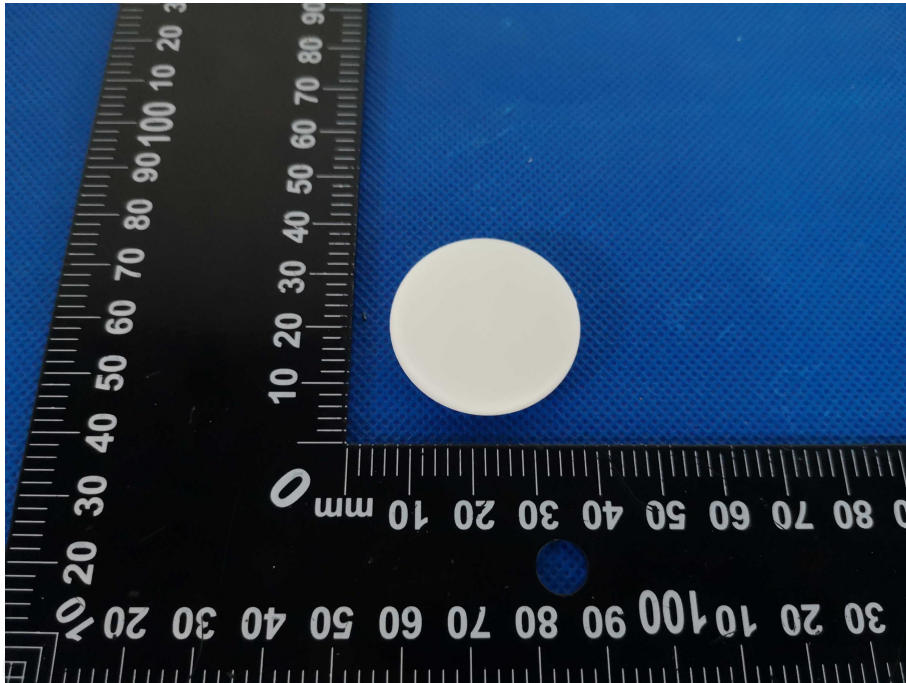
Appearance photograph of EUT



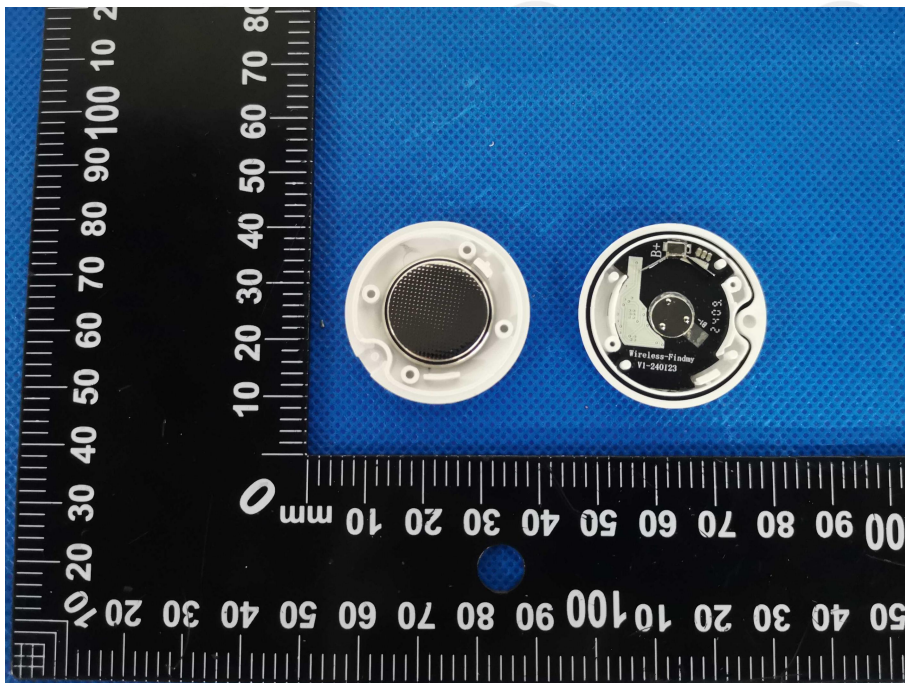
Appearance photograph of EUT



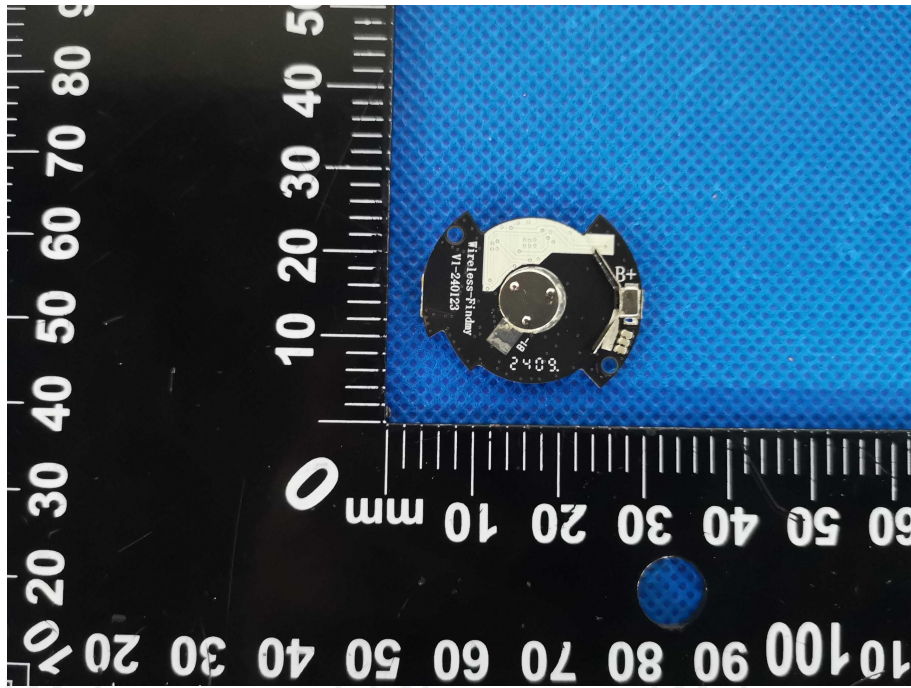
Appearance photograph of EUT



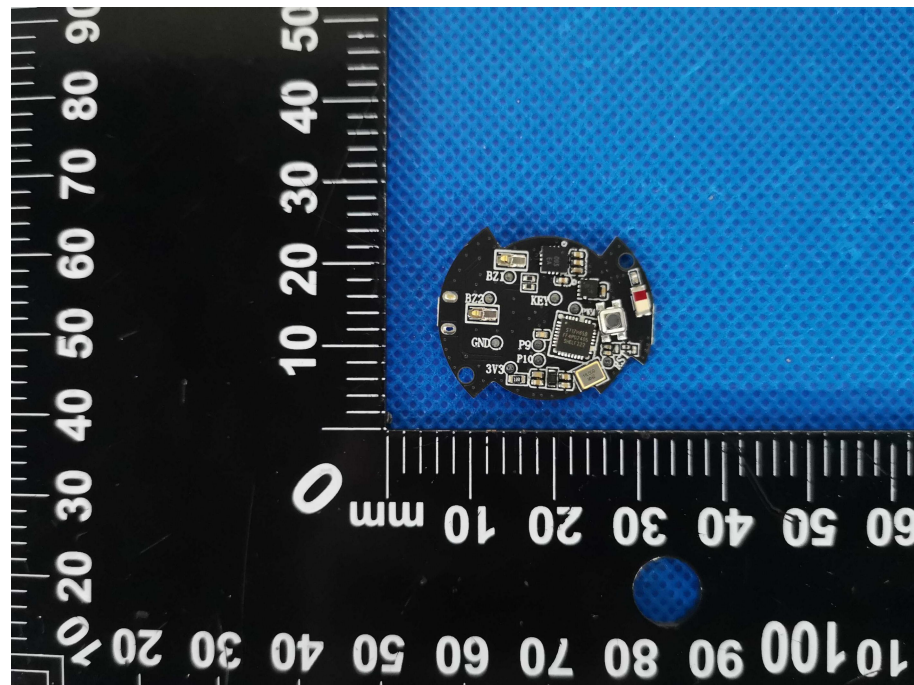
Appearance photograph of EUT



Appearance photograph of EUT



Appearance photograph of EUT



-----THE END OF REPORT-----